

HIGH DEFINITION STEREO MICROSCOPY

SYSTEM 373

The Perfect Balance
 Of Performance & Productivity

High definition stereo microscopy systems from UNITRON deliver exceptional performance, convenience (no PC needed), and ergonomics.



Shown above:
 CAT# 23725RB-HDTRTHOL-ESD

System 373-ESD

- High resolution
- Flexible, adjustable and dependable
- ESD-Safe for static-sensitive environments

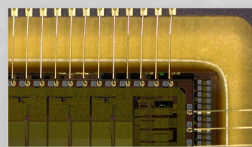


Excelis HD

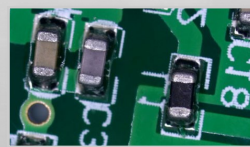
- HDMI-out for instant live viewing — connect to your own monitor or with the included monitor (HDS)
- On-board software for live measurements
- Advanced image acquisition and analysis with the included *CaptaVision*[™] software (requires a PC)



**Your fully-integrated
 inspection solution
 is ready to deliver!**



Perfect color reproduction



Manipulate live images
 without lag



Full HD resolution allows clear
 and fast live image inspection

Choose Your SYSTEM 373!

Choose either the *Excelis* HD camera or the *Excelis* HDS (camera and monitor combination) to complete your System 373 Stereo Microscope. No PC required!

Complete Systems: CAT# 23725RB-HDTRTHOL-ESD
CAT# 23725RB-HDSTRTHOL-ESD (with monitor)

Cameras ONLY: CAT# 18795-HD
CAT# 18796-HDS (with monitor)

SYSTEM 373 SPECIFICATIONS

- ESD-Safe
- TRU Trinocular viewing body
- SWF10x eyepieces, 23mm field of view
- 7x—45x magnification range
- 118mm working distance
- Dual Boom Ball Bearing Stand
- Dimmable LED-High Output Ring Light
- Video adapter



Shown above:
CAT# 23725RB-HDSTRTHOL-ESD

Optional Accessories

Auxiliary Lenses: 0.5x reducing lens, 195mm W.D.; 0.7x reducing lens, 145mm W.D.

Eyepieces: SWF15x eyepiece

SYSTEM 373 OPTICAL SPECIFICATIONS

		Objective Zoom Setting 0.7X – 4.5X			
Eyepieces	Objective	1.0X (included)	0.5X	0.7X	2.0X
10X	Total Magnification (Range)	7X – 45X	3.5X – 22.5X	4.9X – 31.5X	14X – 90X
	Field of View (mm)	32.8 – 5.1	65.7 – 10.2	46.9 – 7.3	16.4 – 2.6
15X	Total Magnification (Range)	10.5X – 67.5X	5.3X – 33.8X	7.4X – 47.2X	21X – 135X
	Field of View (mm)	24.3 – 3.8	48.6 – 7.6	34.7 – 5.4	12.1 – 1.9
	Working Distance (mm)	118	195	145	35

CAMERA SPECIFICATIONS

Sensor / Size	SONY IMX236 / 1/2.8", 0.5x C-mount recommended
Live Resolution	1920 x 1080
Frame Rate	HDMI (60fps); USB 2.0 (30fps)
Image Capture	High Speed SD Card (8GB)
Video Capture	HDMI: 1080p, 30fps to SD Card USB 2.0: 1080p, 30fps to PC/Mac
Exposure Time	0.001sec—10.0 sec
White Balance	Auto
Settings	Gain, Gamma, Saturation, Contraction
Built-in Software	Cloud 1.0 (With live image measurement)

PC Imaging Software
CaptaVision Imaging Software (for PC only; Mac not supported)
Advanced Camera Controls: live/still image measurement and annotation; flat field correction; extended depth of focus (focus stacking); image stitching; HDR (High Dynamic Range) function
Image Types: JPEG, BMP, TIFF and RAW

Output Modes Mode 1: USB 2.0 / Mode 2: HDMI

System Compatibility
Windows XP, Vista, 7, 8, and 10 (32 or 64 bit); Mac OSX (for image transfer to Mac OSX only)
System Requirements: Intel processor (Core 2 Duo or higher); 2GB memory or more; USB 2.0 Hi-Speed port

Power Supply DC12V/1A

MONITOR SPECIFICATIONS

Monitor	Mountable 11.6" HD Display Contrast: 1000:1 Dot Pitch: .1338mm
Input Modes	AC power, HDMI

Design, features and specifications are subject to change without notice.

ISO 9001
Design and production adheres to ISO9001 international quality standard.

ISO 14001
Design and production meets the requirements of international standard ISO 14001 for environmental management.



HDMI Output



USB 2.0 Output



SD Storage